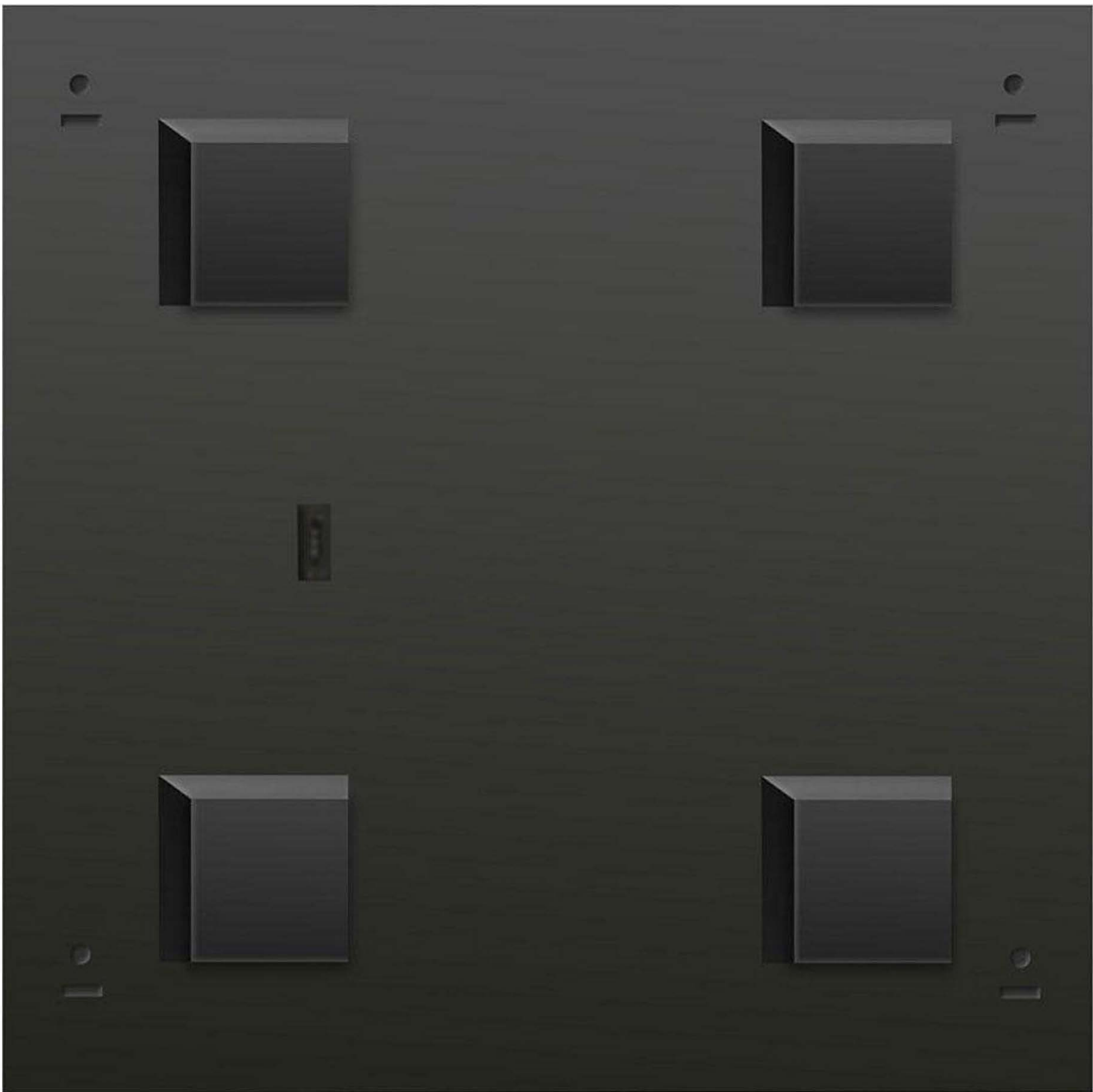


ON SERIES OUTDOOR STANDARD LED PRODUCTS

MODEL NO.: ON SERIES
PIXEL PITCH 4.8 1/5.95 MM
OUTDOOR FIXED LED DISPLAY
HIGH BRIGHTNESS 5000NIT TO 6000NIT
HIGH CONTRAST RATIO
SUPPORT TO DESIGN CUSTOMIZED PANEL
WITH MULTIPLE SIZES FOR DIFFERENT APPLICATIONS
CABINET MATERIAL IN ALUMINUM OR STEEL



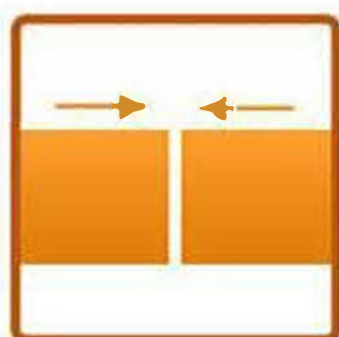
FEATURES



HIGH-CONTRAST



HIGH BRIGHTNESS



SEAMLESS PANEL DESIGN



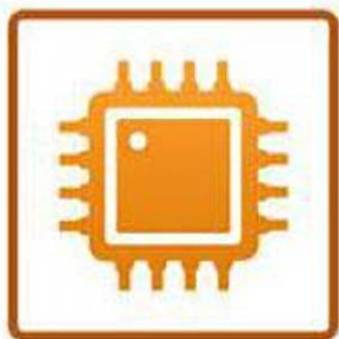
GOOD HEAT DISSIPATION



IP 65 WATER PROOF



HIGH REFRESH RATE



INTELLIGENT MODULE



FRONT AND REAR SERVICE

01 Fast And Easy Maintenance



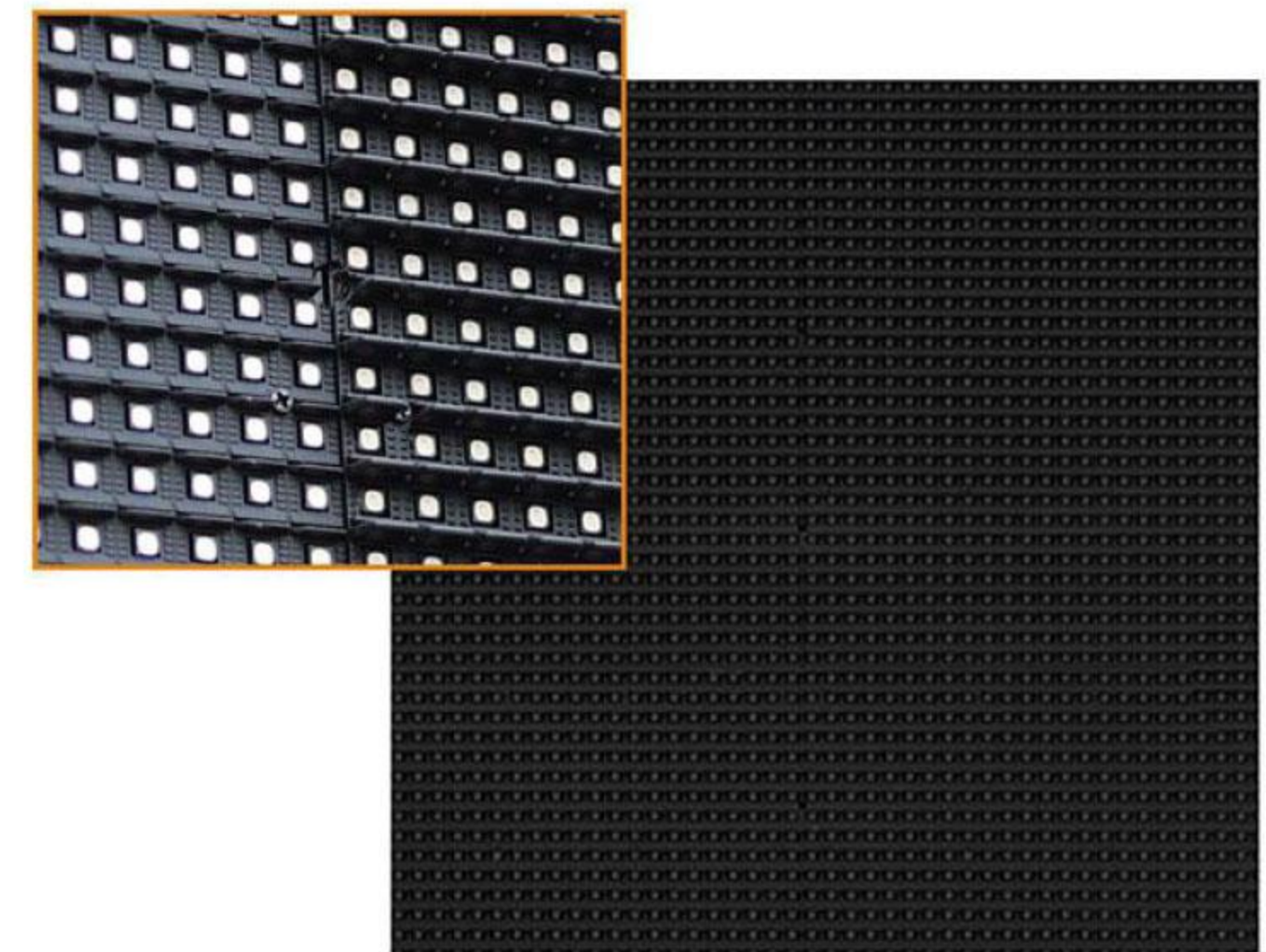
- Step 1: Use "T" Wrench and insert one hole of the module then rotate "T" wrench in anti-clockwise direction to unlock.
- Step 2: Repeat step 1 on the other hole to release the module separate from cabinet easily.
- Step 3: Disconnect power & data cable.

High Brightness & High Contrast Ratio

02

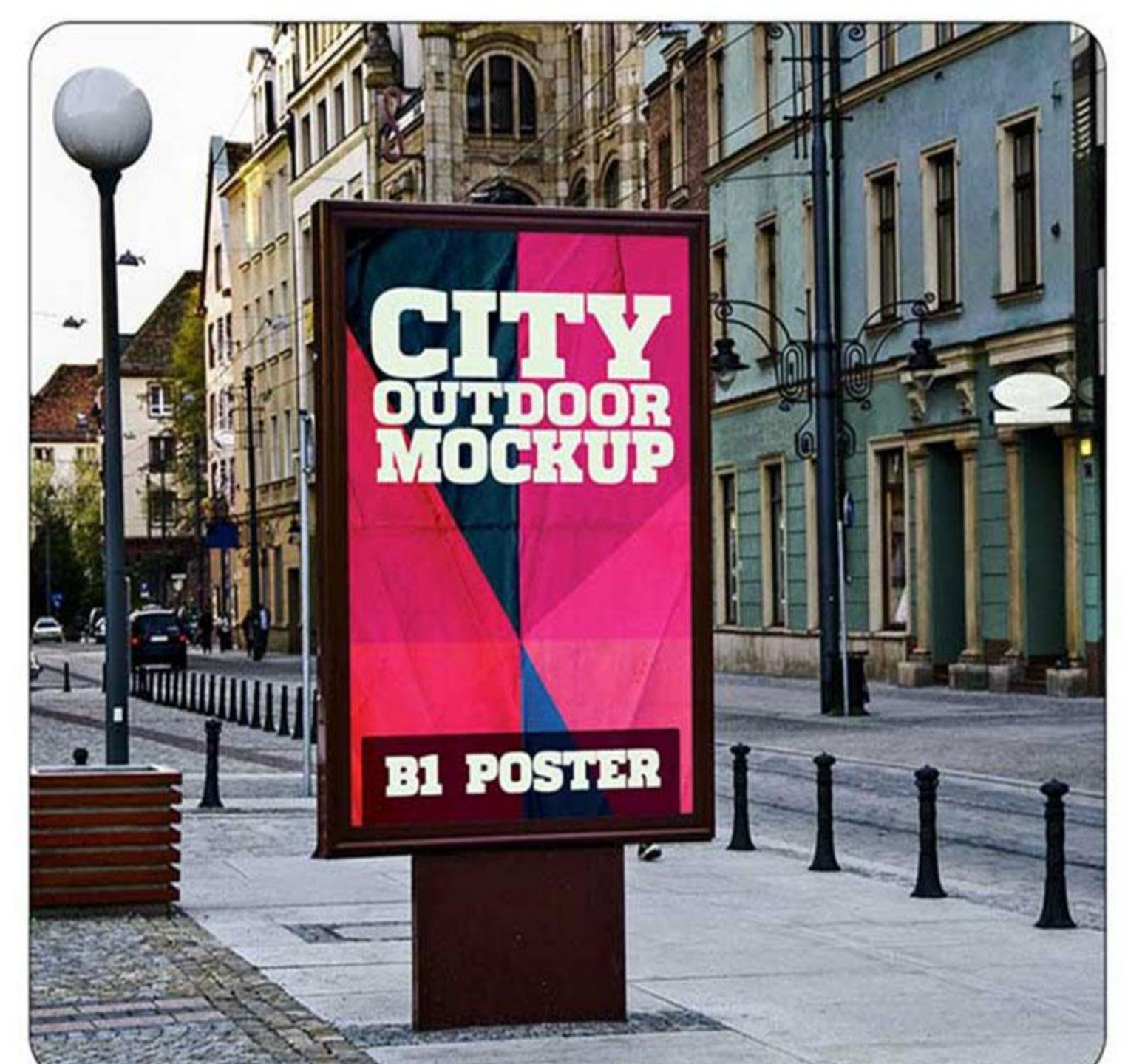
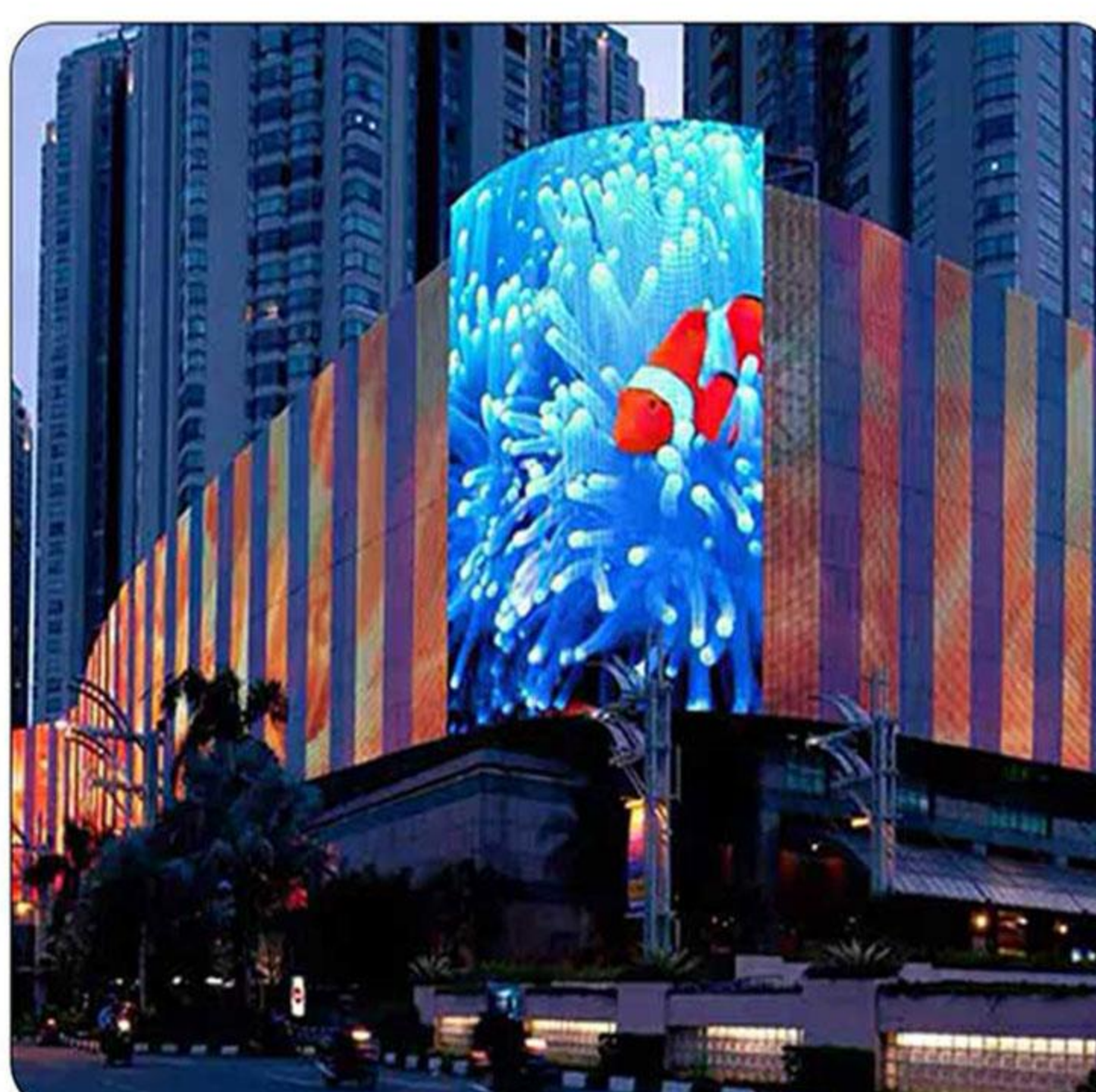
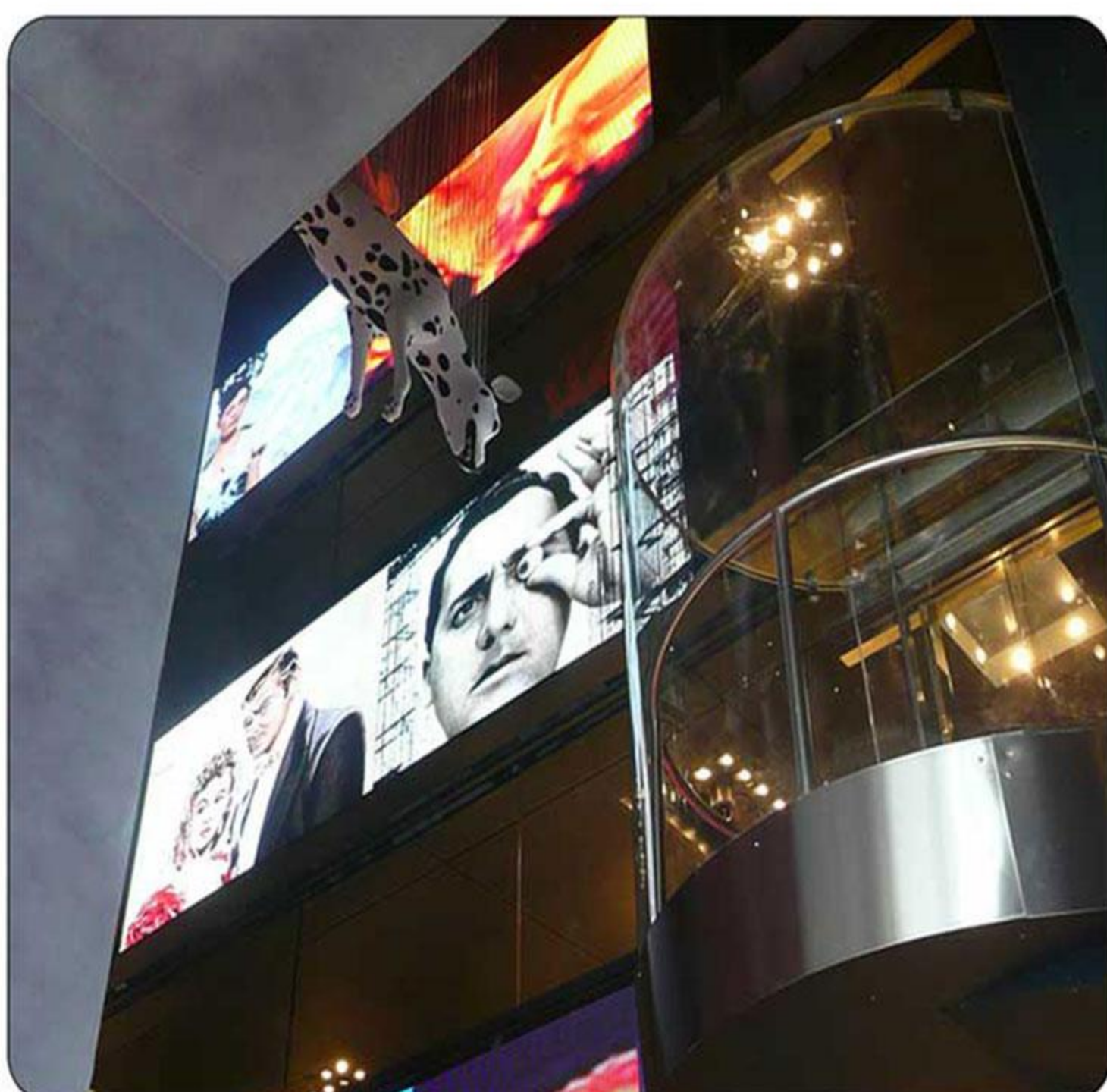


Higher louver featured designed by NewStar which is tested for a better visual experience particular in direct sunlight, than lower one.



There are two types of louvers of Newstar's designs, no matter what to use the lower or higher mask, it's all display excellence performance on screen under different outdoor scenes.

03 Applications





Support Customized Panel Size (W x H)
Front Service or Front & Rear Service

(95mm-120mm)

	Model Number	FN480	FN590
Physical Parameters	LED Configuration	SMD1921	SMD1921
	Pixel Pitch(mm)	4.81	5.95
	Module Resolution(dots)	52*52	42*42
	Panel Resolution(dots)	208*208	168*168
	Pixel Density(dots /m²)	43264	28244
	Module Size(W x H x D)/(mm)	250 x 250mm	250 x 250mm
	Panel Dimension(W x H x D)/(mm)	Customized	Customized
	Panel Material	Aluminum/Steel	Aluminum/Steel
Optical Processing	Color processing (Bit)	14~16 bit	14~16 bit
	Refresh Rate(Hz)	1920~3840Hz	1920~3840Hz
	Driving Mode(scan)	1/9	1/7
	Brightness(nit)	6500nit	6000nit
	Viewing Angle(H/V)	140/140	140/140
Electrical Parameters	Input Voltage(V)	AC110V-240V	AC220V-220V+10%
	Input Power Frequency(Hz)	50/60	50/60
	Max Power(W/m²)	900	768
	Average Power(W/m²)	300	256
Operating Environment	Storage Temperature (°C)	From -10 to 50	From -10 to 50
	Operating Temperature(°C)	From -20 to 60	From-20 to 60
	Storage Humidity(RH)	10%~90%	10%~90%
	Operating Humidity(RH)	10%~90%	10%~90%
	IP Rating	IP65/IP54	IP65/IP54
	Lifetime(hrs)	100000	100000
	Usage Environment	outdoor Fixed Installation	outdoor Fixed Installation
	Panel Maintenance Method	Front /Rear Maintenance	Front /Rear Maintenance
Certification	CE/ RoHS/CCC/UL/	FCRAUSCECCCIntertek	